

INSTRUCTIONS FOR AUTHORS

Submission of papers:

Authors are invited to send their manuscripts (written in either English or Russian) as Word rtf files to the journal editorial office to e-mail address: genphys@mail.ru.

The manuscripts will be reviewed by our experts (referees). According to their conclusions, the authors will be notified on paper acceptance or rejection; or about expert suggestions on paper revision. If a paper is accepted for publication, the authors should send by regular post the corresponding signed copy of the "Copyright Transfer Agreement" form (available at: [http://www. http://nsmds.ru/journal.html](http://www.http://nsmds.ru/journal.html))

to postal address:

"Fundamental'nye problemy sovremennogo materialovedenia" Editorial Office,

I.I. Polzunov Altai state technical university,

Lenin st. 46, Barnaul 656038, Russia.

(Russian authors should mail also the corresponding "Akt Expertizy" to the same postal address.)

The scanned versions of the corresponding signed "Copyright Transfer Agreement Form" (and, for Russian authors, the corresponding "Akt Expertizy") should be emailed to e-mail address genphys@mail.ru

Filetype:

MS Word file of the manuscript should be prepared according to the general instructions below; we are kindly asking the authors to look through the sample below. Besides, please prepare and email to "Fundamental'nye problemy sovremennogo materialovedenia" Editorial Office a copy of the manuscript written in Adobe PDF format (using any suitable converter).

Length:

Original research papers should be limited to 6 pages (including Tables and Figures placed in the proper positions in the text). Field on the left side – 2cm., right - 2cm., top – 2 cm, bottom – 2 cm.

Structure of the manuscript:

PAPER TITLE: CENTERED,

TIMES NEW ROMAN 12 BOLD, CAPITAL LETTERS

Firstauthor A.B.¹, Secondauthor C.D.² –Times New Roman 12, bold, centered

¹ Affiliation, address, country - Times New Roman 10, centered

² Affiliation, address, country - Times New Roman 10, centered

Abstract: (bold) Abstract should not exceed 10 lines and Italic font. Please, read these instructions carefully and strictly follow them. Use A4 paper in file settings, set all margins (top, left, right, and bottom) of 1 inch. Please, check that all paper parts (figures, tables, equations, etc.) are within these margins.

Keywords: (bold) Keywords should not exceed 10 lines and Italic font. Limit – 15 words.

1. Introduction – Times New Roman bold, 12 font, centered

"Fundamental'nye problemy sovremennogo materialovedenia" journal publishes reviews and original research papers (in either English or Russian) focused on the following topics: Physics, Physics of the solid state, Materials science All contributions may not be published elsewhere. All papers submitted will be rigorously peer-reviewed prior to publication.

2. Paper organization

Please use Times New Roman 11 font with single line spacing in all parts of the paper, except for Title, Affiliations and corresponding author e-mail address. Please use *Italic* font in order to stress something. Please, use **bold** for headlines only.

The section or subsection title have no dot after it; after going text starts from the new line without the intend. The first lines of the following paragraphs should have ½ inch intend from the left side.

Subtitles. Subtitles within one section should be bold-font typed. They are ½-inch intended. In contrast to Section titles, subtitles have dot at the end and the after going text should be typed just after the dot. If possible, please, do not use second or third level subtitles.

Page numbering. Please, DO NOT use page numbering.

3. Figures

Figures are mentioned as Fig.1, Fig.2, etc. in the paper text. They should be placed in the proper place of the paper.). For best results, please submit illustrations in the actual size at which they should be published. We are recommending intending at least one line from the previous text.

one line intend

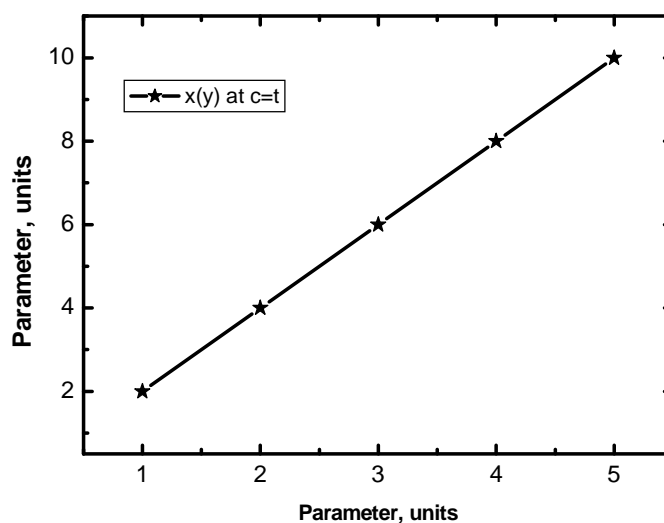


Fig.1. Figure caption is placed just after the image, it should be centered

one line intend

We are recommending to the authors to print the final file using some laser white-and-black printer in order to evaluate the publishing quality of the figures. Please note that the quality obtained will be some better than that at “camera-ready” printing. To obtain proper quality use file images with 300 dpi resolution (or higher). It is preferred to use Times New Roman or Arial fonts for the texts inside the figures.

4. Equations

Equations should be typed at separate lines and subsequently numbered by Arabic numerals in round brackets; the proper punctuation marks should be used after the equation with respect to the equation position in the text.

$$a^2+1/2c^3=\exp[(\Delta\Theta-E)/RT]. \quad (1)$$

5. Tables

Tables mentioned as Table 1, Table 2, etc. should be placed in the proper place of the text, the one line intend between the text and the table is recommended. Table title should be typed just above the text.

one line intend

Table 1. A sample table.

Samples	Parameter 1, unit	Parameter 2, unit	Parameter 3, unit
Sample 1	60	20	220
Sample 2	80	20*	380

*if necessary, use footnotes below the table.

6. Conclusions

Following this instruction, the author will be able to create the proper Word doc file. We are recommending to print it using laser white-and-black printer and to check the identity of the final version.

The Editorial office thanks you for your efforts on paper preparation. Please, use Times New Roman italic for Acknowledgements section.

References

References should be subsequently numbered by Arabic numerals in square brackets, e.g. [1, 3, 5-9], following the sample style below.

1. A.K. Mukherjee // *Mater. Sci. Eng. A* **322** (2002) 1.
2. W.A. Soer, J.T.M. De Hosson, A. Minor, J.W. Morris, E. Stach // *Acta Mater.* **52** (2004) 5783.
3. C.C. Koch, I.A. Ovid'ko, S.Seal, S. Veprek, *Structural Nanocrystalline Materials: Fundamentals and Applications* (Cambridge University Press, Cambridge, 2007).
4. A.E. Romanov, V.I. Vladimirov, In: *Dislocations in Solids*, ed. by F.R.N. Nabarro (North Holland, Amsterdam, 1992), Vol. 9, p.191.
5. W. Pollak, M. Blecha, G. Specht // *US Patent 4572848*.
6. <http://www.ipme.ru/e-journals/MPM/>

In a separate file contains:

- UDC articles;
- Title of the article CAPS BOLD (in Russian and English);
- Information on all authors : full name in Russian and English (with a Uppercase italics (initials after surname) , scientific degree, academic rank, post, phone , e-mail;
- Full and abbreviated name of the institution , which aims article (town, country);
- № grant funding to do this work;
- Contact phone website for negotiation and e -mail.

NOTE. While using any materials protected by copyright (figures, tables, photos, etc.), the authors should ask the permission from the copyright owner to reproduce the quoted object (see *copyright_permission_request.doc* in the documents list). Please, attach the copy of such permission to the "Copyright Transfer Agreement Form".